

## Lightem L8STDAIO Series 8 port Digital/Analog In/Out to TCP/IP Converter

L8STDAIO is a industrial grade 8channel Digital/Analog In/Out to TCP/IP converter, which enables 8Ch serial devices to be connected in TCP/IP network. With its software the device can be found easily in the network. Configuration can be easily done via web management.

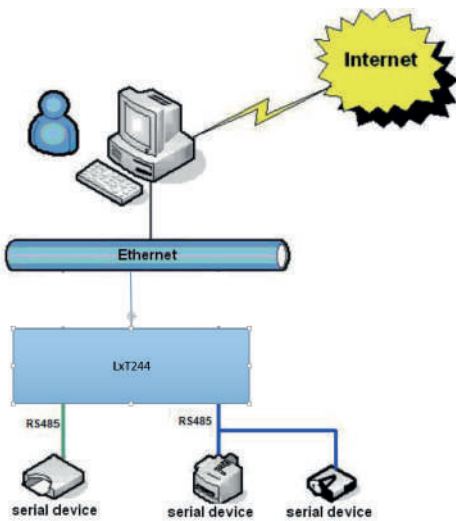


### FEATURES

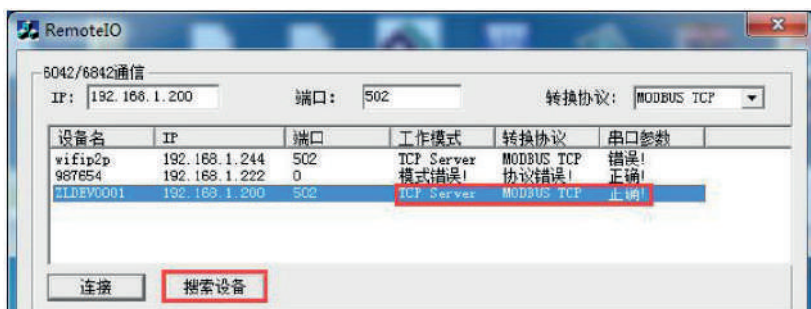
- 8Ch Digital In/Out to TCP/IP conversion
- 8Ch Analog (0~5V) to TCP/IP conversion
- Conversion based on ModBus TCP & RTU
- Provided software for IO & TCP/IP mapping
- Built in web server, easy configuration via web browser
- Support Baud from 1200-115200
- Support virtual port, web management or Vircom configurations

### APPLICATION DIAGRAM

Serial device connected to the Ethernet network



### NETWORK MANAGEMENT



## SPECIFICATIONS

Network interface	Values
Ethernet port	1x 10/100Mbps RJ45
Digital Data port	DI1-Di8: 8x Dry Contact Input   DO1-DO8: 8x Dry Contact Output
Analog port	AI1-AI4: 4x 0-5V Analog Input AI5-AI8: 4x 4-20mA Analog Input (configurable when ordering)
RS485 port	Baud rate 9600, 8, N, 1
Software features	
Protocol	TCP, HTTP, UDP, ICMP, ARP, IP, DNS, DHCP
Virtual serial platform	Window 98/2000/XP/Win7/Win8
Configuration	Web, Vircom, serial type AT command
Electrical	
Power supply	DC9-24V, Max 3W
Others	
Dimensions	92 x 197 x 25mm
Working temperature	-45 ~ +85°C
Storage temperature	-45 ~ +85°C
Humidity	5 ~ 95% RH

## ORDERING INFORMATION

P/N	Descriptions
L8STDAIO	8Ch Digital/Analog In/Out to TCP/IP Converter