

## Lightem L4ST244 Series 4port RS232/485/422 to TCP/IP Converter

L4ST244 is a industrial grade 4channel serial RS232/422/458 to TCP/IP converter, which enables 4Ch serial devices to be connected in TCP/IP network. With its software the device can be found easily in the network. Configuration can be easily done via web management.

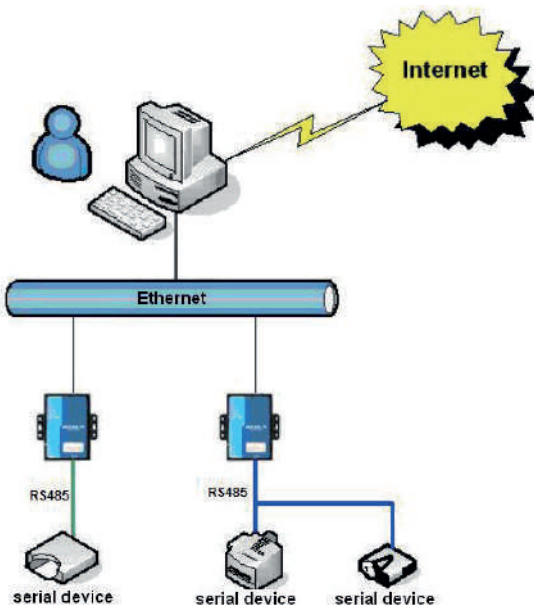


### FEATURES

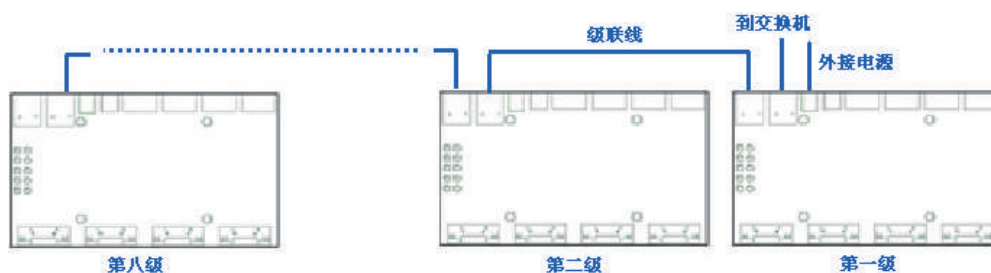
- 4Ch RS232/422/485 serial to TCP/IP conversion
- 2x 10/100 RJ45 port
- Support full duplex low cost reliable servers
- Support TCP server / clients, UDP mode
- Built in web server, easy configuration via web browser
- Support Baud from 1200-460800
- Support virtual port, web management or Vircom configurations
- 2kV surge protection on RJ45 ports
- Optional power supply by POE

### APPLICATION DIAGRAM

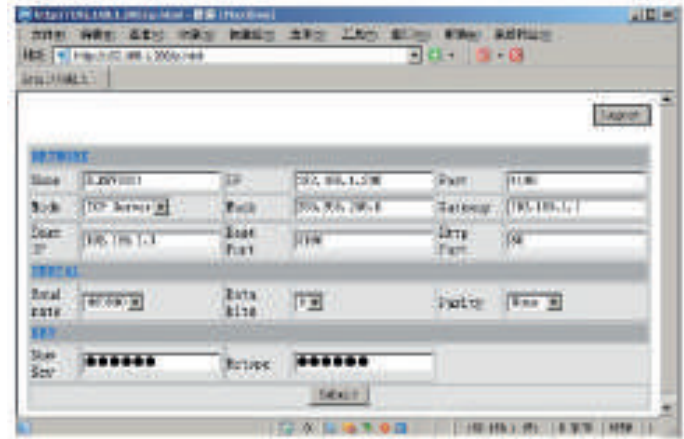
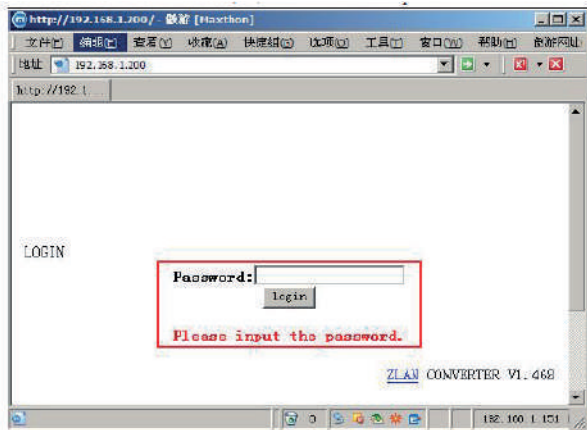
Serial device connected to the Ethernet network via L4ST244 converter



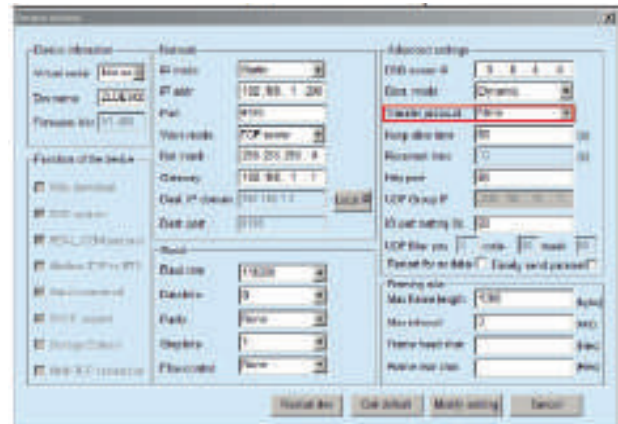
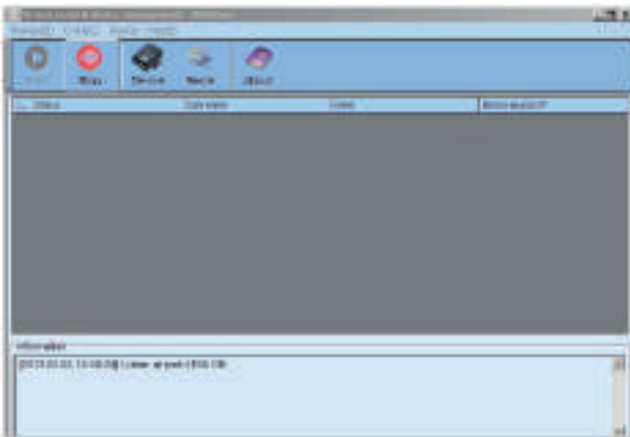
### CONNECTION DIAGRAM FOR UPLINK PORT



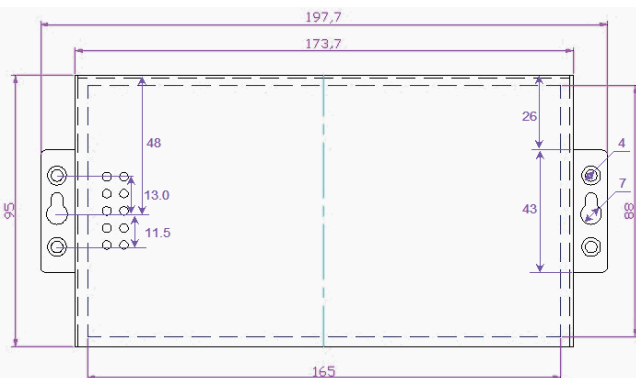
## NETWORK MANAGEMENT



## ALTERNATE WINDOW CONFIGURATION TOOL



## DIMENSIONS



## SPECIFICATIONS

Network interface	Values
Ethernet port	2x 10/100Mbps RJ45
Surge protection	2kV electromagnetic isolation
Serial interface	RS232/422/485
no. of port	4x serial DB9 for RS232, 4x 4PIN terminal for RS422/485
Parity bits	none, even, odd, space, mark
Data bits	5-9
Stop parity bit	1, 2
Flow control	RTS/CTS, DTR/DCR, Xon/Xoff
Data rate	1200bps~460800bps
Software feature	
Protocol	TCP, HTTP, UDP, ICMP, ARP, IP, DNS, DHCP
Virtual serial platform	Window 98/2000/XP/Win7/Win8
Configuration	Web, Vircom, serial type AT command
Electrical	
Power supply	DC9~24V, Max 4W
Others	
Dimension	197 x 92 x 25mm
Working temperature	-45 ~ +85°C
Storage temperature	-45 ~ +85°C
Humidity	5 ~ 95% RH

## ORDERING INFORMATION

P/N	Descriptions
L4ST244	4port RS232/485/422 to TCP/IP Converter