

## Lightem L8ST24 Series 8 port RS232/485 to TCP/IP Converter

L8ST244 is a industrial grade 8channel serial RS232/458 to TCP/IP converter, which enables 8Ch serial devices to be connected in TCP/IP network. With its software the device can be found easily in the network. Configuration can be easily done via web management

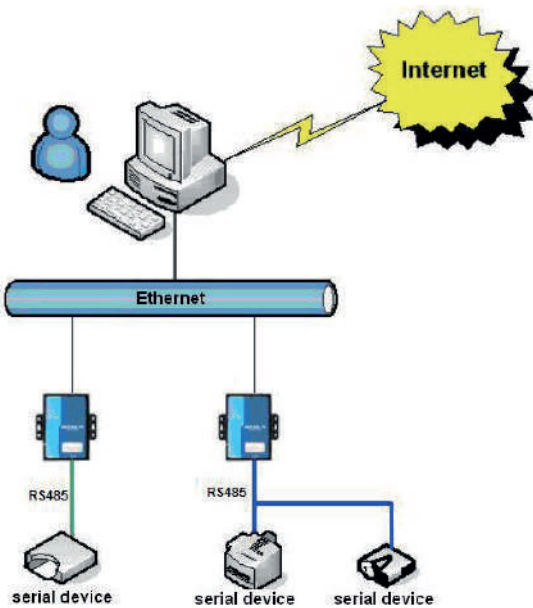


### FEATURES

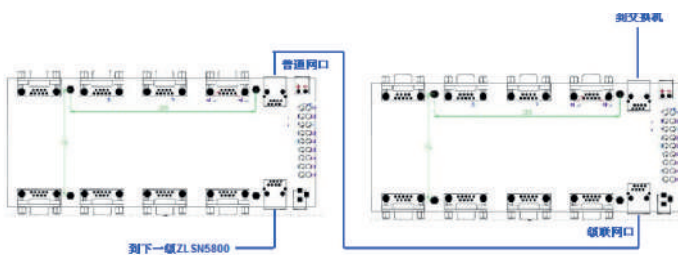
- 8Ch RS232/485 serial to TCP/IP conversion
- 2x 10/100 RJ45 port
- Support full duplex low cost reliable servers
- Support TCP server / clients, UDP mode
- Built in web server, easy configuration via web browser
- Support Baud from 1200-460800
- Support virtual port, web management or Vircom configurations
- 2kV surge protection on RJ45 ports
- Optional power supply by POE

### APPLICATION DIAGRAM

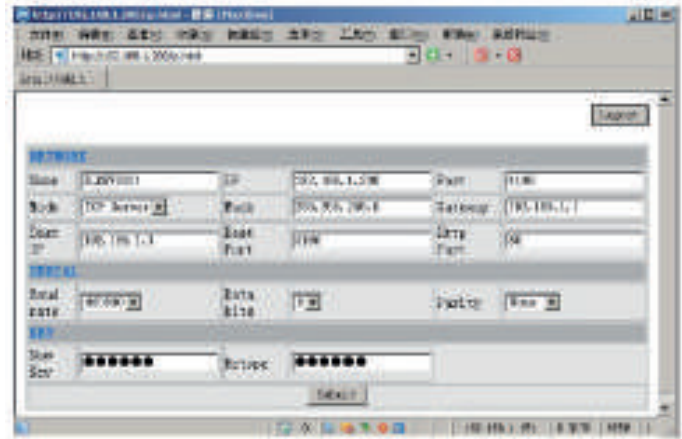
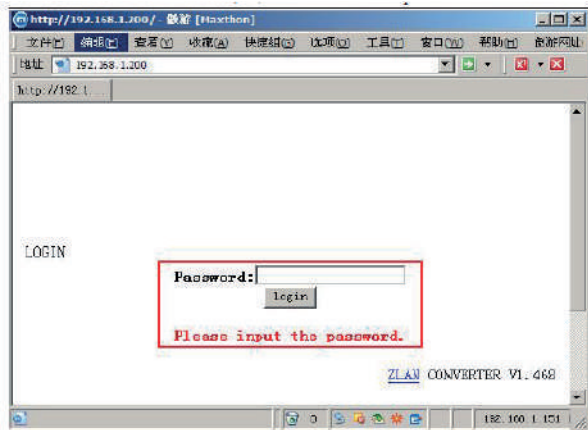
Serial device connected to the Ethernet network via L4ST244 converter



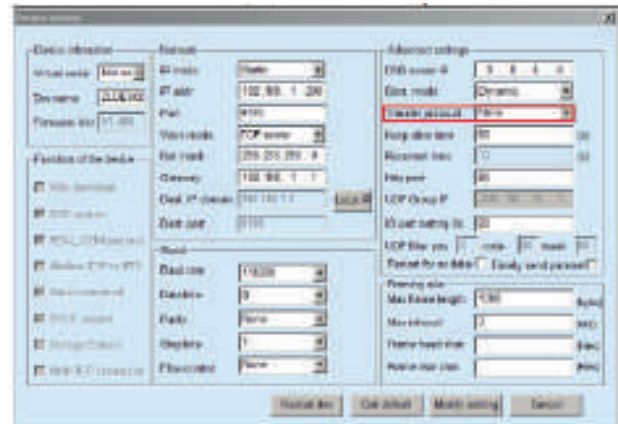
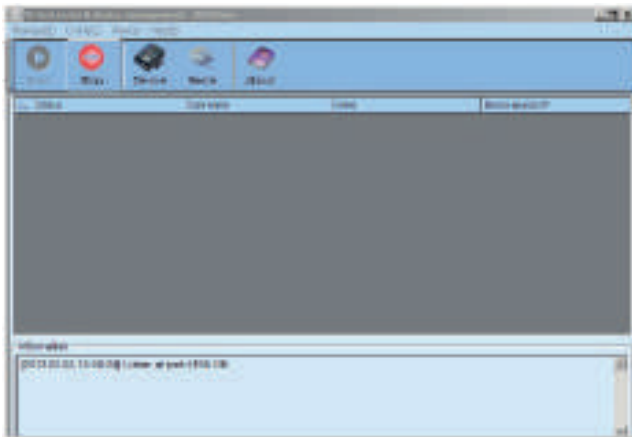
### CONNECTION DIAGRAM FOR UPLINK PORT



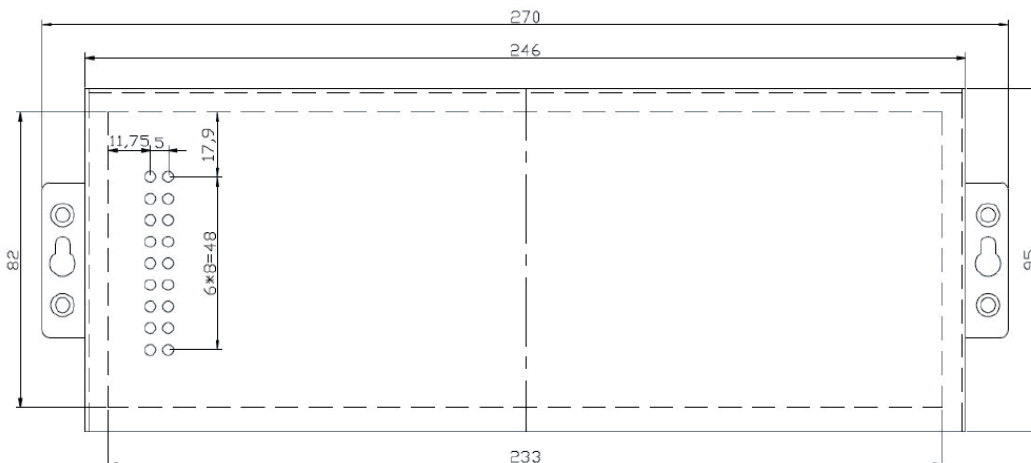
## NETWORK MANAGEMENT



## ALTERNATE WINDOW CONFIGURATION TOOL



## DIMENSIONS



## SPECIFICATIONS

<i>Network interface</i>	<i>Values</i>
<i>Ethernet port</i>	2x 10/100Mbps RJ45
<i>Surge protection</i>	2kV electromagnetic isolation
<i>Serial interface</i>	RS232/485
<i>No. of port</i>	8x serial DB9 for RS232/485
<i>Parity bits</i>	none, even, odd, space, mark
<i>Data bits</i>	5-9
<i>Stop parity bit</i>	1, 2
<i>Flow control</i>	RTS/CTS, DTR/DCR, Xon/Xoff
<i>Data rate</i>	1200bps~460800bps
<i>Software feature</i>	
<i>Protocol</i>	TCP, HTTP, UDP, ICMP, ARP, IP, DNS, DHCP
<i>Virtual serial platform</i>	Window 98/2000/XP/Win7/Win8
<i>Configuration</i>	Web, Vircom, serial type AT command
<i>Electrical</i>	
<i>Power supply</i>	DC9~24V, Max 4W
<i>Others</i>	
<i>Dimension</i>	270 x 105 x 26mm
<i>Working temperature</i>	-45 ~ +85°C
<i>Storage temperature</i>	-45 ~ +85°C
<i>Humidity</i>	5 ~ 95% RH

## ORDERING INFORMATION

<i>P/N</i>	<i>Descriptions</i>
L8ST24	8 port RS232/485 to TCP/IP Converter