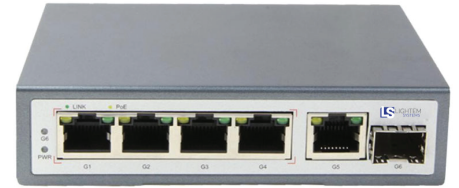


## 6 Ports 10/100/1000M UPOE Switch with 4x 1G RJ45 @UPOE 70W, 1x 1G RJ45 & 1x 1G SFP

LPG6-4PU-1SFP is a 4x 10/100/1000M RJ45 UPOE@70W, 1x 1G RJ45 port and 1x 1G SFP UPOE switch. It features 3KV network port surge protection which is important for harsh outdoor environment and ensure the reliability of the uninterrupted system.



### FEATURES

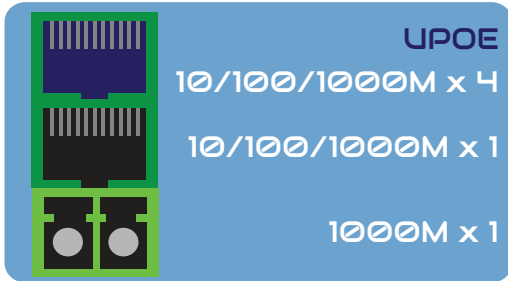
- 4x 1G RJ45 UPOE@70W, 1x 1G RJ45 & 1x 1G SFP
- Supports IEEE 802.3x flow control for Full-duplex Mode and backpressure for Half-duplex Mode
- Supports IEEE 802.3bt (Max 95W / single port)
- RJ45 Ports AUTO Negotiation/AUTO MDI/MDIX
- Storage Exchange Forwarding Mechanism and 4M Forward Memory
- Standard Desktop design
- Supports Wire-Speed forwarding

### SPECIFICATIONS

6Ports 10/100/1000M UPOE Switch with 4x 1G RJ45 @UPOE 70W, 1x 1G RJ45 & 1x 1G SFP	
Number of RJ45 UPOE ports @ 60W (10/100/1000M)	4
Number of RJ45 ports (10/100/1000M)	1
Number of 1G SFP port	1
Power Pin Assignment	1/2and 3/6 , or alternatively over 4/5(+) and 7/8 (-)
Performance Specifications	
Transmission Method	Store-And-Forward
Network Protocol and Standards	IEEE 802.3u
	IEEE 802.3x Flow Control
POE standard	IEEE802.3bt @ 70W (Max 95W / single port)
POE power	70W per port
Environmental	
Operating temperature	-20 ~ 55°C
Storage temperature	-40 ~ 80°C
Operating humidity	5 ~ 95% non condensation
Power Supply	AC 100-240V or DC 48-57V   65W
LED indicators	Power supply, network status, POE status
Physical	
Dimension	118 x 95 x 28mm
Weight	0.5 kg

# TELECOM/DATACOM SYSTEM

## FUNCTIONAL DIAGRAM



## ORDERING INFORMATION

PN	Description
LPG6-4PU-1SFP	6Ports 10/100/1000M UPOE Switch with 4x 1G RJ45 @UPOE 70W, 1x 1G RJ45 & 1x 1G SFP