

USB2.0 & 10/100M Ethernet (RJ45) Fiber Converter

Lightem LUSB20EXT-1D is a USB2.0 optical fiber extender(also known as USB2.0 optical terminal). It composed by a transmitter and a receiver. It extends the host USB interface (USB2.0) to the far end through a single mode or multi-mode optical fiber. It has good high temperature characteristics and works statically in the high temperature environment of 75°C.The maximum transmission distance is 250m (single mode or multi-mode fiber).The products can be applied in video conference, multimedia information release, government departments, medical systems, commercial display, multimedia function hall, security monitoring, public utilities and other fields.



FEATURES

- Compatible USB2.0 and USB1.1 proceple , support USB cameras 、 Printer 、 USB disk 、 KVM
- Automatical identify High-speed(25Mbps-480Mbps),Full-speed(500Kbps-12Mbps),Low-speed(10Kbps-1.5Mbps)USB equipment
- Fiber transmission distance 250m (SM or MM fiber)
- Single core transmission, no need drive, compatible all system, plug and play

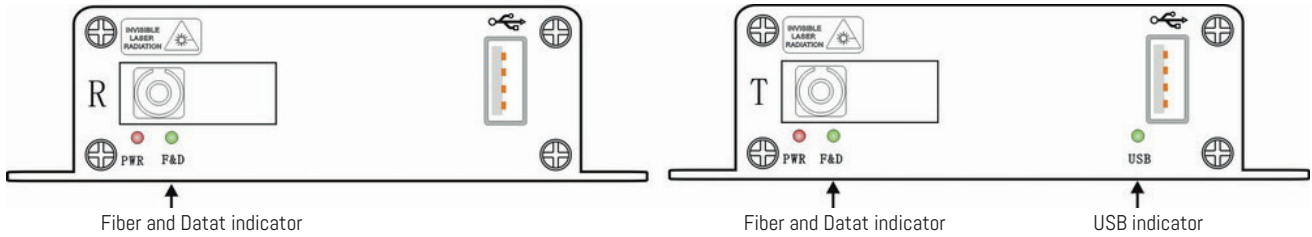
SPECIFICATIONS

Optical	
Fiber Port	SM/MM SC/FC/ST/LC
Wave length	1310nm/1550nm
Physical	
Size (L× W ×H)	104mm x104mm x28mm
Case	Aluminium alloy
Color	Black
N.W.	0.7Kg
Power	
Voltage	5V DC
Sender power consumption	<3.5W
Receiver power consumption	<3.5W
Ethernet	
Physical interface	RJ45
Operating mode	Full duplex / half duplex
Support agreement	IEEE802.3 、 10M 、 10/100M adaptive
Environment	
Working temperature	-20°C-70°C
Storage temperature	-40-85°C
Humidity	0-95% (non-condensing)

USB CONNECTOR (TYPE A)

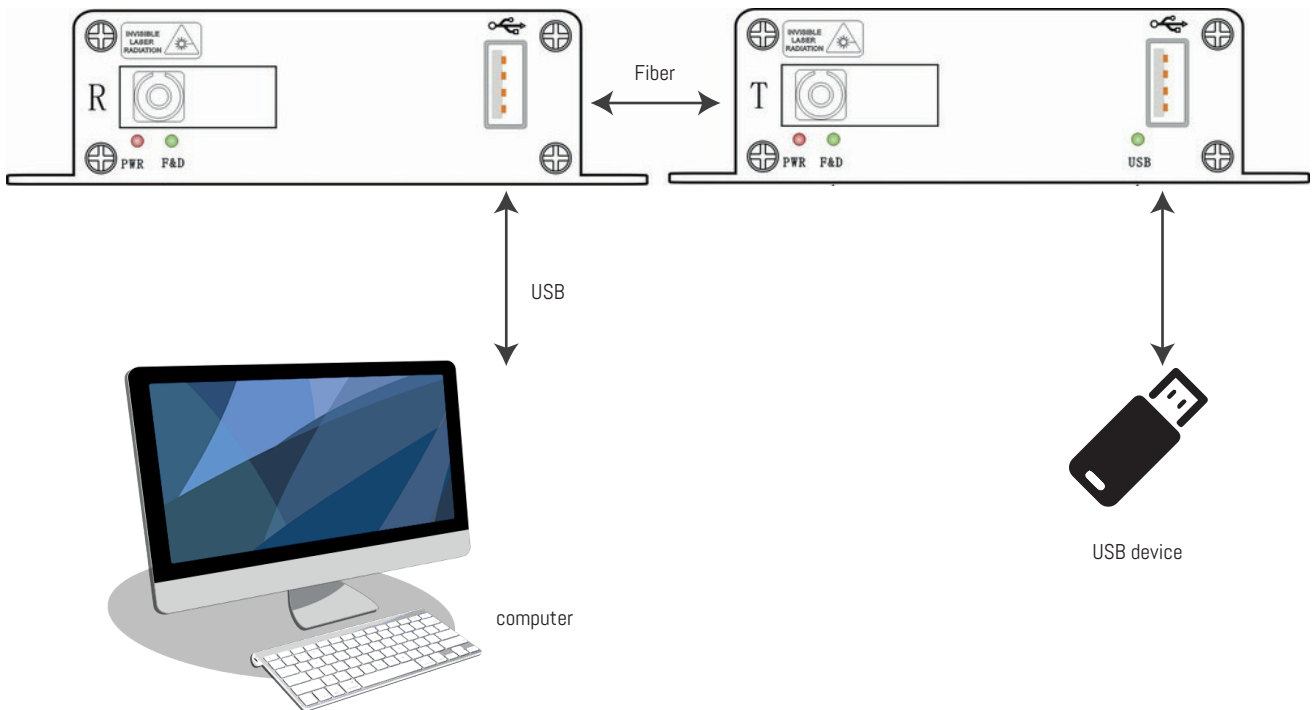
Transmitter	1pcs , use USB wire connect with mainframe
Receiver	1pcs , connect with USB equipment

PANEL



Declare : when fiber and data connection well, F&D Light blink /off, Transmitter input USB equipment working well ,USB indicator on / off. if indicator unnormal please re-plug.

CONNECTION DIAGRAM



ORDERING INFORMATION

P/N	Descriptions
LUSB20EXT-1D	USB2.0 & 10/100M Ethernet (RJ45) Fiber Converter